

Job Name - Job#
CD1022A* - Lasered (Front)
w/Stock Background

*Please specify: BL-Blue, GO Gold, GR-Green, RD- Red



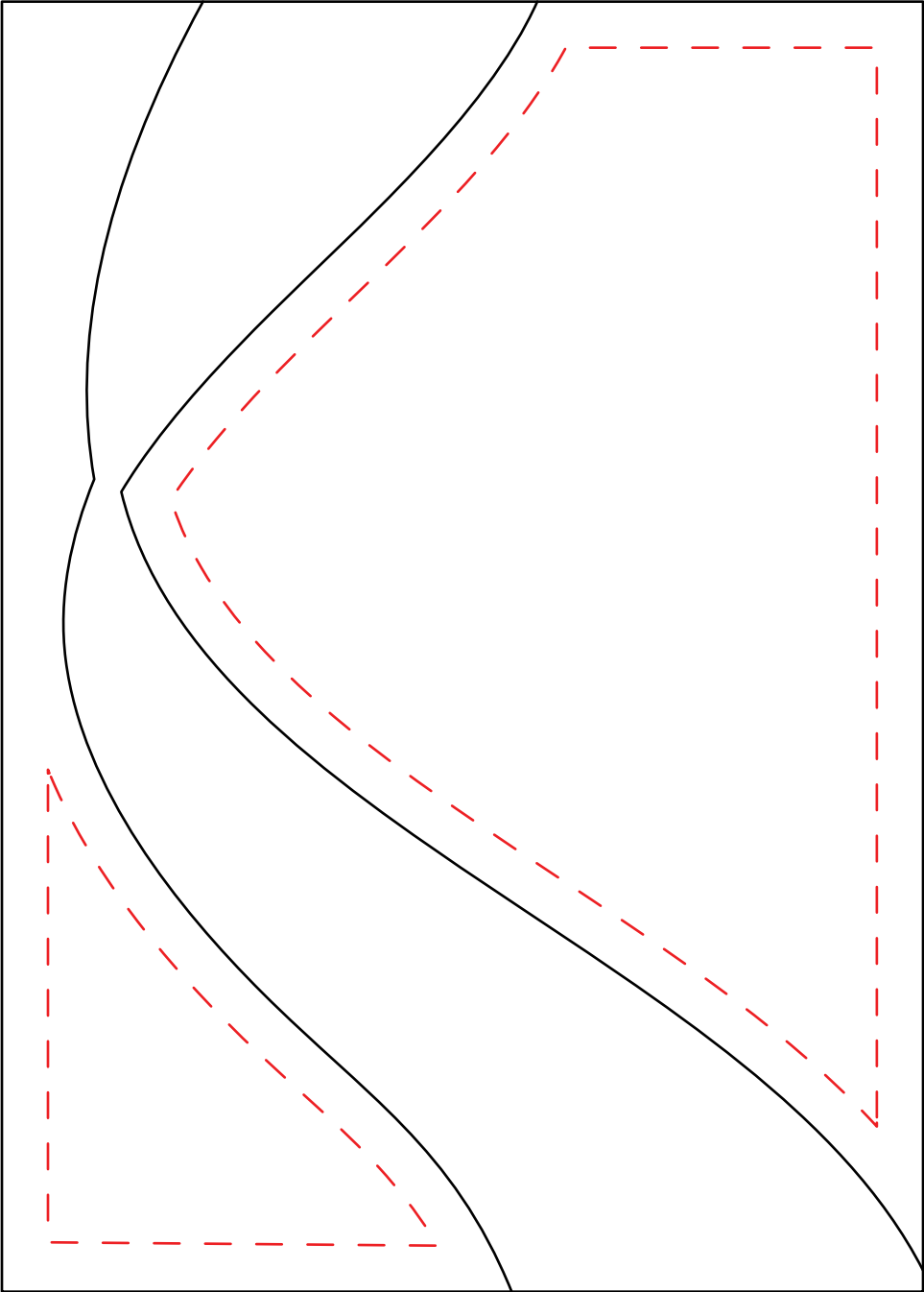
CATALOG SAMPLE ART

PLEASE NOTE

The imprinting process on this award has a minimum font requirement of at least 10 point font size. Here is a sample:

This line is 10 point min font size

Please make sure that your artwork has all text elements (either within logos or copy areas) above the font size listed.



Red dotted line indicates actual irregular imprint area and will not print.

Imprint area interior estimated at 2.75" wide x 3.125" high (large) & .875" wide x 1.25" high (small).