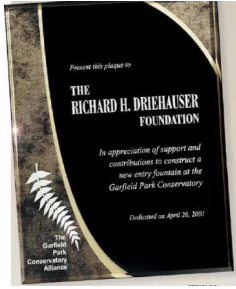


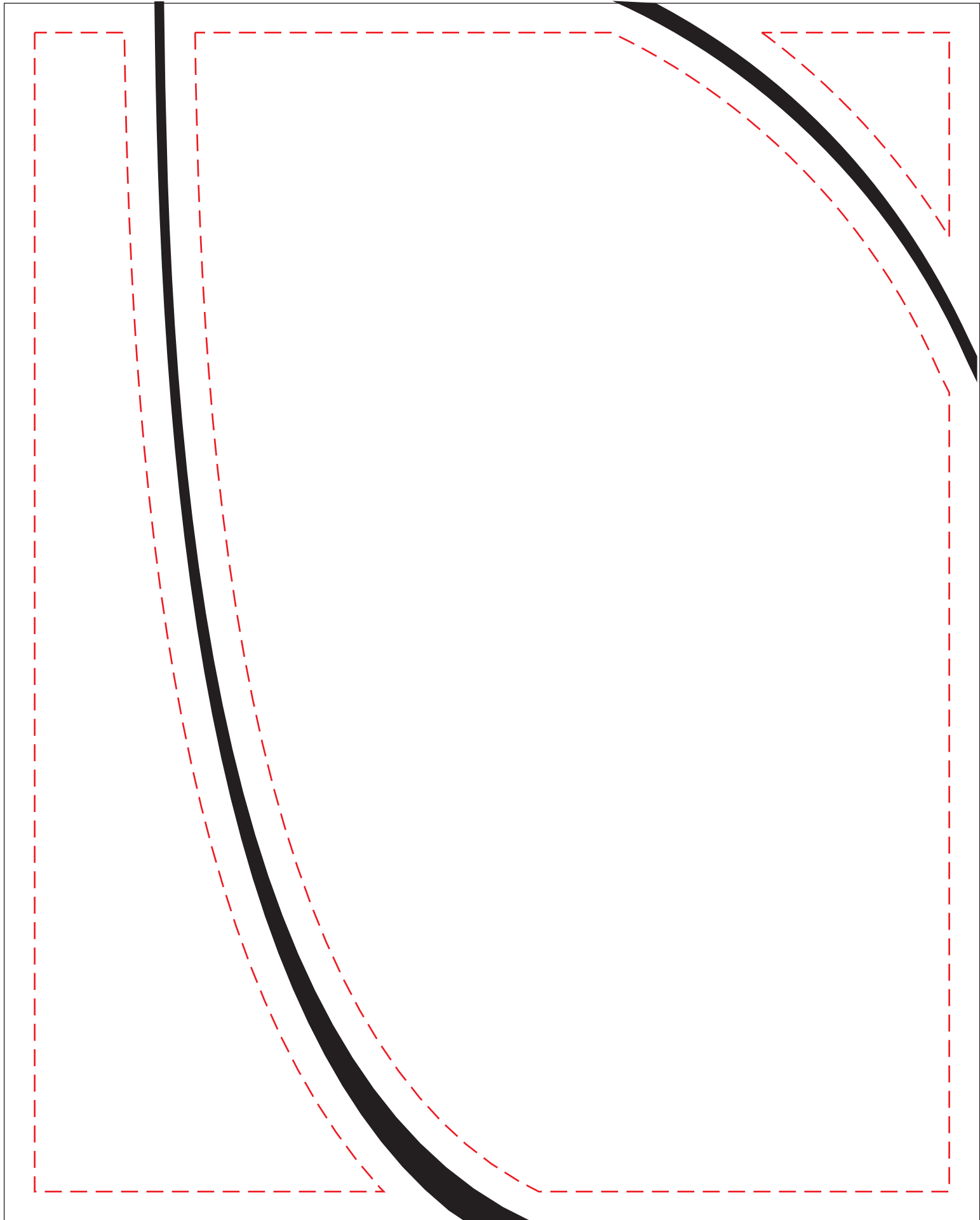
Job Name - Job#  
C750BL\* - Lasered (Back)  
\*Please specify Blue (B), Green (GN),  
Gold (GO), or Red (R)

**PLEASE NOTE**

The imprinting process on this award has a minimum font requirement of at least 10 point font size. Here is a sample:  
**This line is 10 point min font size**  
Please make sure that your artwork has all text elements (either within logos or copy areas) above the font size listed.



CATALOG SAMPLE ART



Red dotted line indicates **actual** irregular lasered imprint area and will not print.  
Lasered imprint area interior **estimated** at 4.5" wide x 7.375" high.